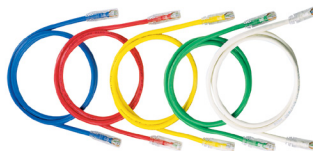


# NetKey® Category 6 UTP Patch Cords

## SPECIFICATIONS

Category 6/Class E patch cords shall be constructed of UTP 24 AWG stranded copper cable and a modular plug at each end. Patch cords shall be used in all work area outlets and patch panels. Patch cords shall be wired to be compatible with both T568A and T568B wiring schemes.



## TECHNICAL INFORMATION

<b>Category 6/Class E channel performance:</b>	Exceeds ANSI/TIA-568.2-D Category 6 and ISO 11801 Class E channel requirements at swept frequencies up to 250 MHz Meets ANSI/TIA-568.2-D and ISO 11801 Category 6 component requirements at swept frequencies up to 250 MHz $\diamond$
<b>Cable diameter:</b>	0.235" (6.0mm) nominal
<b>FCC compliance:</b>	Complies with ANSI/TIA-1096-A (formerly FCC Part 68); contacts plated with 50 microinches of gold
<b>IEC compliance:</b>	Meets IEC 60603-7
<b>PoE compliance:</b>	Supports IEEE 802.3af/802.3at and 802.3bt type 3 and type 4 PoE applications
<b>Safety compliance:</b>	cULus Listed; UL 1863 and CAN/CSA-C22.2 (UL File E129886)
<b>RoHS compliance:</b>	Compliant
<b>Flammability rating:</b>	CM rated

## KEY FEATURES AND BENEFITS

<b>100% Performance tested:</b>	Confidence that each patch cord delivers specified performance
<b>Patented tangle-free latch:</b>	Prevents snags and provides easy release
<b>Slender strain relief boot:</b>	Provides easy access in high-density applications
<b>Identification:</b>	Provides identification of performance level, length, and quality control number for future traceability

## APPLICATIONS

Applications include:

- Ethernet 10BASE-T, 100BASE-T (Fast Ethernet), and 1000BASE-T (Gigabit Ethernet)
- 155 Mb/s ATM, 622 Mb/s ATM, 1.2 Gb/s ATM
- Token Ring 4/16
- Voice over internet protocol (VoIP)

### NetKey Category 6 Patch Cords

<b>Foot lengths:</b>	NK6PC* <sup>^</sup> Y
<b>Meter lengths:</b>	NK6PC**M <sup>^</sup> Y

\*Feet Lengths: 3, 5, 7, 10, 14, 20

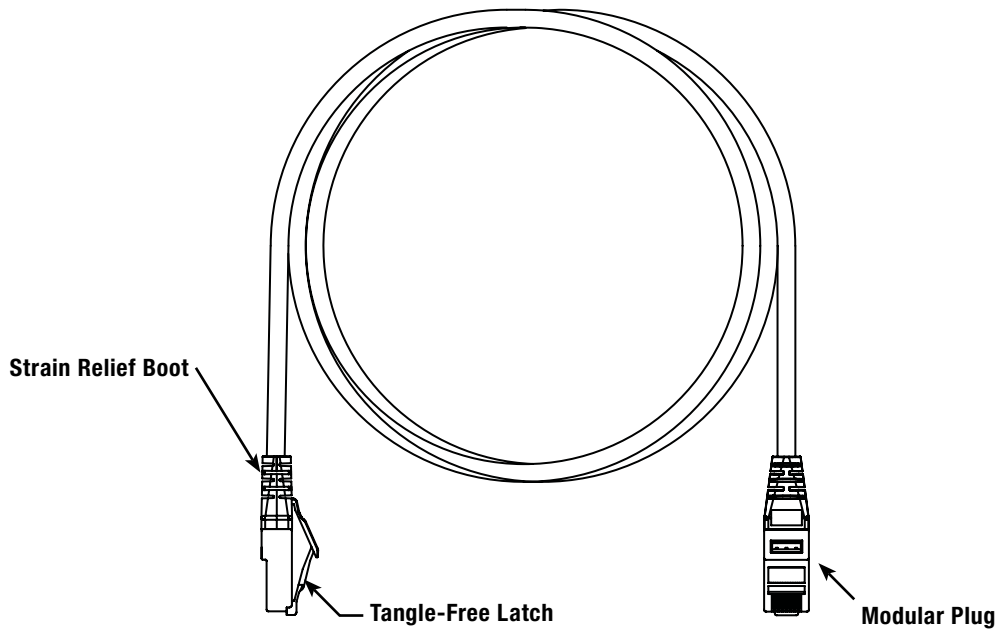
\*\*Meter Lengths: 1-5 meters (every 1 meter)

<sup>^</sup>For standard cable colors other than Off White, replace with BU (Blue), GR (Green), RD (Red), or YL (Yellow)

$\diamond$ Lengths 1m to 15m or 1 foot to 49 feet are guaranteed to meet TIA and ISO component and channel requirements. Lengths greater than 15m or 49 feet are guaranteed to meet ISO component and both TIA and ISO channel requirements.

# NetKey® Category 6 UTP Patch Cords

## ENGINEERING DRAWING



Dimensions are in inches. [Dimensions in brackets are metric].

### WORLDWIDE SUBSIDIARIES AND SALES OFFICES

PANDUIT US/CANADA  
Phone: 800.777.3300

PANDUIT EUROPE LTD.  
London, UK  
Phone: 44.20.8601.7200

PANDUIT SINGAPORE PTE. LTD.  
Republic of Singapore  
Phone: 65.6305.7575

PANDUIT JAPAN  
Tokyo, Japan  
Phone: 81.3.6863.6000

PANDUIT LATIN AMERICA  
Guadalajara, Mexico  
Phone: 52.33.3777.6000

PANDUIT AUSTRALIA PTY. LTD.  
Victoria, Australia  
Phone: 61.3.9794.9020

For a copy of Panduit product warranties, log on to [www.panduit.com/warranty](http://www.panduit.com/warranty)

# PANDUIT®

For more information  
**Visit us at [www.panduit.com](http://www.panduit.com)**  
Contact Customer Service by email: [cs@panduit.com](mailto:cs@panduit.com)  
or by phone: 800.777.3300

© 2023 Panduit Corp.  
ALL RIGHTS RESERVED.  
COSP564-WW-ENG  
11/2023